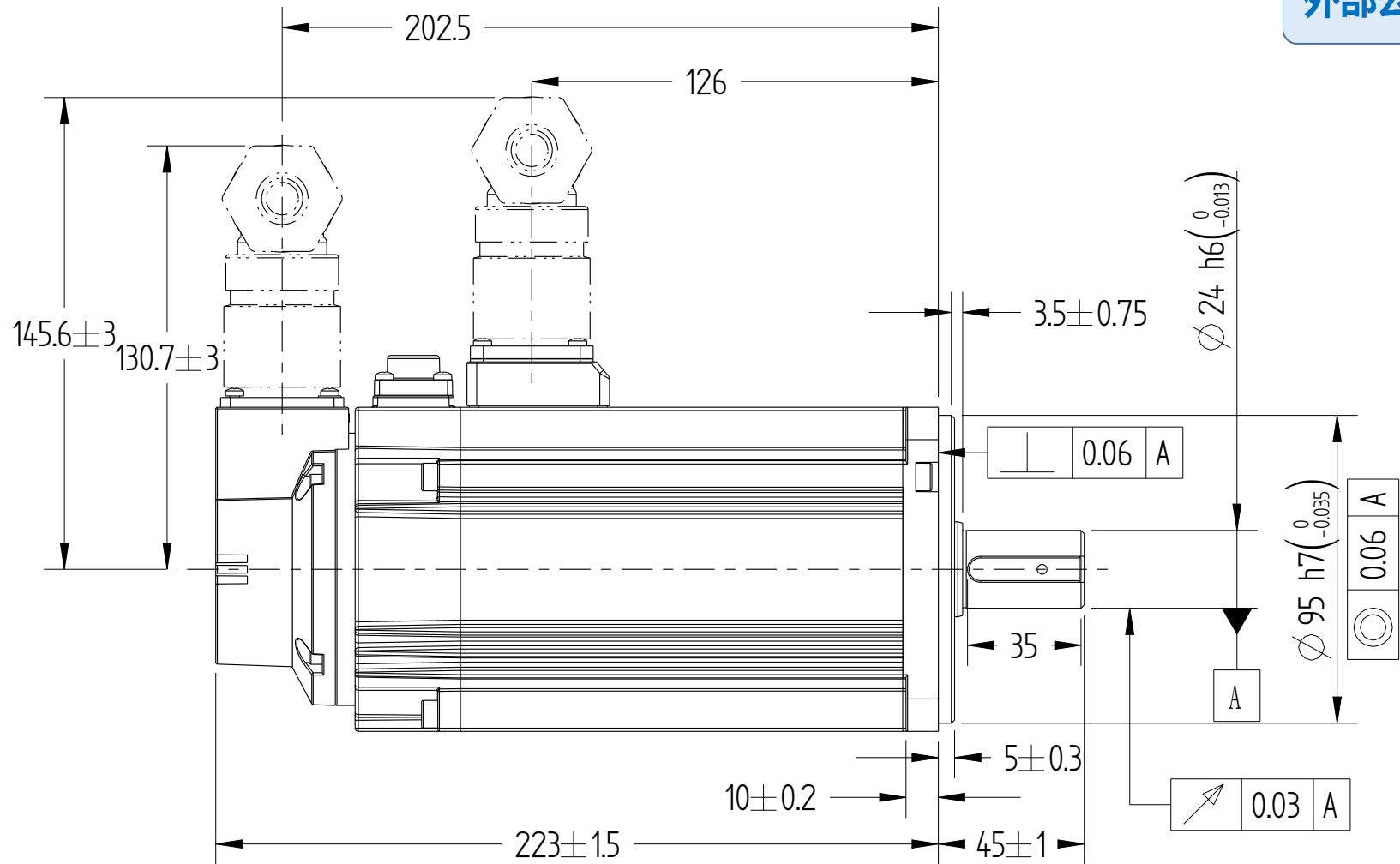
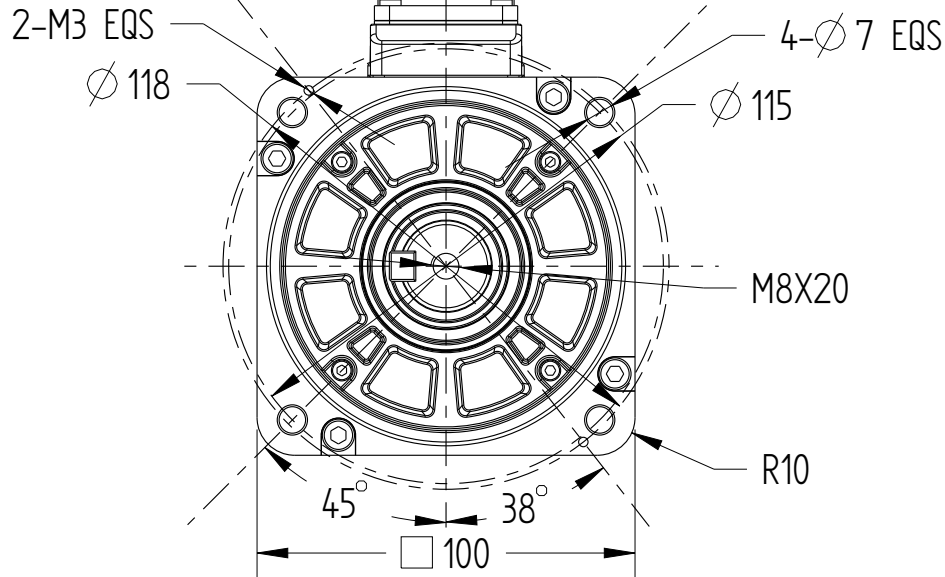


正样
2024.06.17
B01

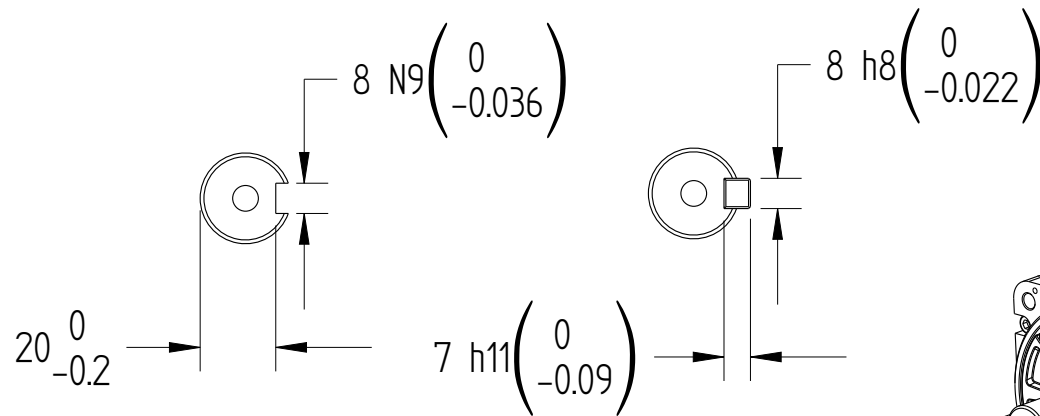
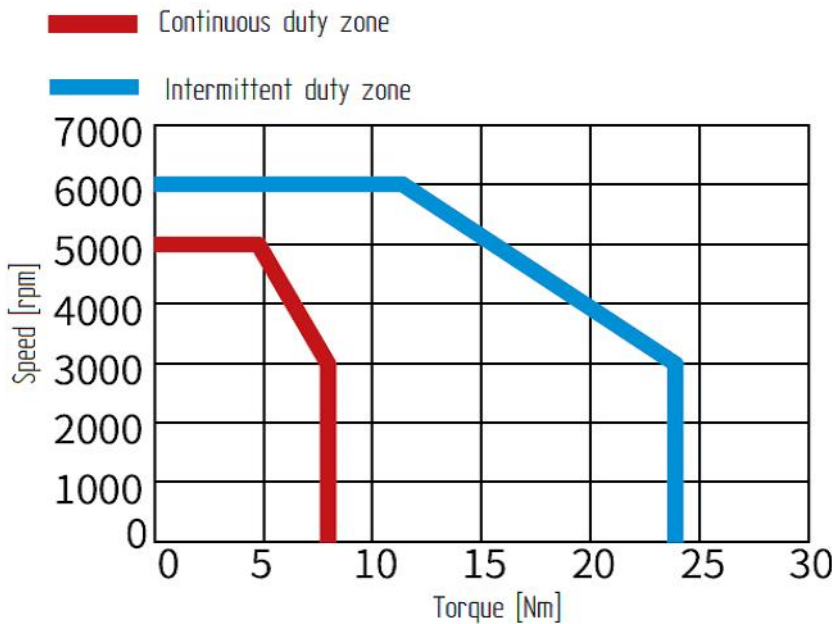
外部公开

Amendment	Description

Unit: Millimeter (mm)

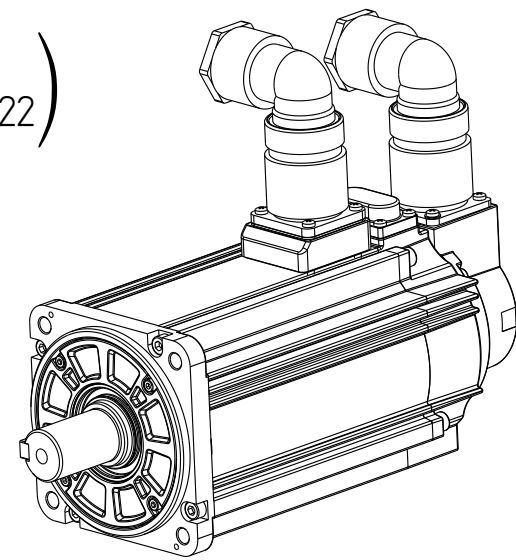


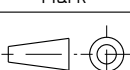
Basic function parameters	
Rated power KW	2.5
Rated voltage V	380
Rated current A	≤7.2
Peak current at rated speed A	≤26
Rated torque Nm	7.96
Peak torque at rated speed Nm	23.9
Rated speed rpm	3000
Max speed rpm	6000
Rotor inertia kg·cm ²	4.3±10%
Encoder resolution	26bit
Insulation class	F(155℃)
Protection level	IP67
Static torque of brake Nm	≥8
Brake power supply	DC24±10%
Duty cycle	S1
Radial line load N	≤686
Axial load N	≤196



Dimension of shaft end

Dimension of shaft end with key



				Motor Outline Drawing			01117898-WX	
B01	Replace	/	20240424					
B00	New Archive	/	20230908					
Version	Change method	Changed by	Date	/				INOVANCE
Design	/							
Check	/							
Craft	/							
Verify	/			Weight	Scale	Version	Page 1 of 1	
Standardization	/			7.35kg	1:2	B01	Model	MS1H2-25C30□-A634R-INT
Approve	/							